

东莞市亿彩电子科技有限公司

DONG GUAN EVERCOLOR ELECTRONICS CO., LTD.

YC2006

● Features

- Combines high output GaAs IRED with high sensitive phototransistor.
- Wide detection rang: 4~10mm
- Non-contact detecting manner

● Applications

- IC card electric power meter.
- AMR system.
- Water meter.
- OA equipment: facsimile, printer, copier etc.
- Combined with direction detector IC(ST288A), it can be used as detecting moving direction, rotating speed and moving distance etc.

● Dimensions Unit:mm

Unless otherwise specified, the tolerances are $\pm 0.2\text{mm}$

● Absolute Maximum Ratings(Ta=25°C)

Parameter		Symbol	Rating	Unit
Input	Forward Current	I _F	50	mV
	Reverse Voltage	V _R	6	V
	Power Dissipation	P	75	mW
Output	Collector-Emitter Voltage	V _{CEO}	25	V
	Emitter-Collector Voltage	V _{ECO}	6	V
	Collector Power Dissipation	P _C	50	mW
*Operating Temperature		T _{opr}	-20~65	°C
Storage Temperature		T _{stg}	-30~75	°C
** Soldering Temperature		T _{sol}	260	°C

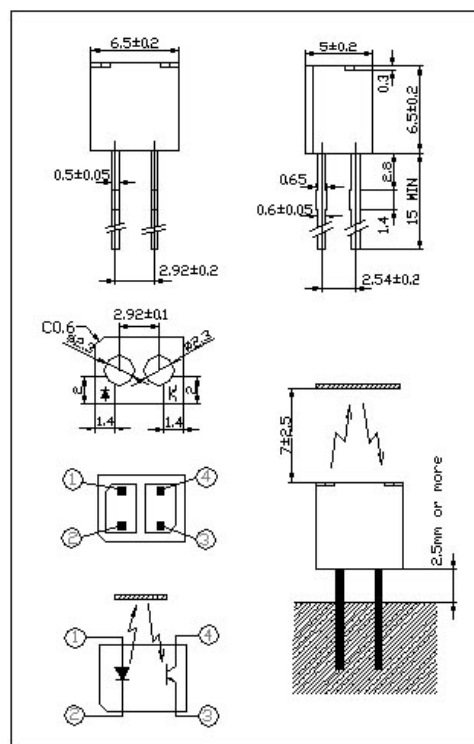
*The special requirement could be met according to customer's request.

**Soldering time: 5s max. Soldering position: at least 2.5mm from the base of the package.

● Electro-Optical Characteristics(Ta=25°C)

Parameter		Symbol	Test Condition	Min.	Typ.	Max.	Unit	
Input	Forward Voltage	V _F	I _F =20mA	-	1.25	1.5	V	
	Reverse Current	I _R	V _R =3V	-	-	10	μA	
Output	Collector Dark Current	I _{CEO}	V _{CE} =20V	-	-	1	μA	
	Collector Light Current	I _L	V _{CE} =5V I _F =8mA	L3	0.3	-	-	mA
				L4	0.4	-	-	
				L5	0.5	-	-	
Collector-Emitter Saturation Voltage	V _{CE(SAT)}	I _F =8mA I _C =0.15mA	-	-	0.4	V		
Transfer Character-istics	Response Time	Rise Time	T _r	I _F =20mA V _{CE} =5V RC=100	-	5	-	μS
		Fall Time	T _f		-	5	-	

Notes: Collector light current I_L, Collector-emitter saturation voltage V_{CE(SAT)}, Relative current, Response time are measured within 2~5m m between photointerrupter's top and reflecting surface. The value is affected by the smooth of light reflecting surface.



东莞市亿彩电子科技有限公司

DONG GUAN EVERCOLOR ELECTRONICS CO.,LTD.

Fig.1 Forward current vs. forward voltage

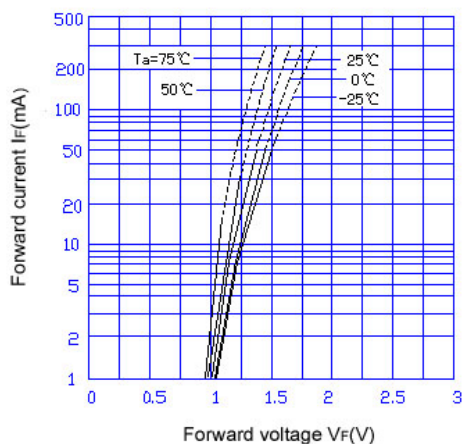
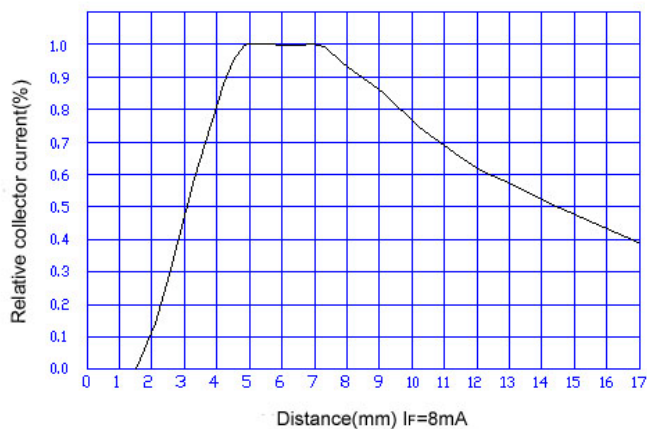


Fig.2 Relative collector current vs. distance



- Distance in Fig.2 is from photointerrupter's top to the reflecting surface.
- The reflecting surface is a sub-reflection aluminum plate. its surface is parallel to the top of photointerrupter.
- When relative collector current rises to 1.0, the conversion efficiency is the highest under this distance.
- The curves above are for you reference.